

CURING OVENS ELECLINE

DESIGNED FOR
MAXIMUM
EFFICIENCY



proton

MASCHINENBAU GMBH

DESIGNED TO ACHIEVE HIGH
EFFICIENCY AT LOW OPERATING
COSTS AS A RESULT OF
ENGINEERING STUDIES AND YEARS
OF EXPERIENCE.

“ MANUFACTURED IN ACCORDANCE
WITH EUROPEAN STANDARDS ON SAFETY,
ISOLATION AND AUTOMATION. ”

POWERFUL, ECONOMICAL,
DURABLE!

These are electrostatic powder paint curing ovens used in manual systems. It is suitable for small capacity businesses.

Ovens, which are modular in design, are very easy to assemble and disassemble.

Although it has panels providing insulation on the floor, it provides an entrance with the floor with wheel entry channels that can be adjusted at desired intervals.

Top blowing bottom suction type circulation applied. Special designed air channels provides homogeneous air distribution.

Suitable for bar transfer systems.

MODEL	INSIDE-OUT DIM (MM)			CIRCULATION FAN KW/H	HEATING POWER KW/H
	WIDTH	HEIGHT	LENGHT		
ELECLINE 12-1519	1200-1480	1500-1900	1500-2200	0,75	18
ELECLINE 12-2019	1200-1480	1500-1900	2000-2700	0,75	24
ELECLINE 12-2519	1200-1480	1500-1900	2500-3200	1,5	24
ELECLINE 12-3019	1200-1480	1500-1900	3000-3700	1,5	36
ELECLINE 12-3519	1200-1480	1500-1900	3500-4200	1,5	48
ELECLINE 12-4019	1200-1480	1500-1900	4000-4700	2,2	48

CURING OVENS

ELECLINE

DESIGNED FOR
MAXIMUM
EFFICIENCY



Automatic chimney smoke exhaust

A chimney can be programmed to open a few minutes before the end of the firing, in order to empty the chamber from the smoke. It can be remotely controlled from the panel, you do not need to do this mechanically as in most construction.



Safe Working

Thanks to the safety thermostat against overheating, you will not encounter adverse situations, it protects your machine and your workplace.



Automatic Stop & Cooling

Digitally enter the curing temperature and curing time, just press Start. When the oven process is finished, it sounds the warning horn, automatically stops and cools itself automatically.



Easy Loading

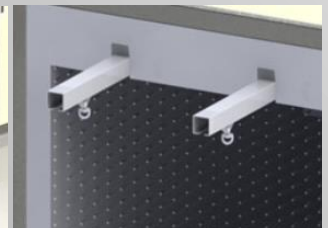
Thanks to the wheel channels at the same level with the ground, you can easily push the trolley into the oven. You can choose the most suitable loading system for loading the workpieces in the furnace.



Lower carts



Rails in the floor



Upper tracks

The doors which automatically snap (optional)

To open them just pull the door. The lock has adjustable door pressure to close them - only need to push the door. The lock automatically will catch the door to shut them well



Paddle box (optional)

In order to minimize the effect of heating the hall when the oven door is opened, above the doors is mounted hood for outflow heat to a specific location.



PID Heating Control (optional)

PID is a system in which, by adjusting the voltage at the setpoint temperature, the heating power that is currently needed is selected - minimizing the effect of temperature fluctuations.



SPRAYBOOTH

BOOTHLINE-FL or CY

DESIGNED FOR
MAXIMUM
EFFICIENCY



proton

MASCHINENBAU GMBH

Easy to Use
Quick Color Change
Minimum paint loss
Easy assembly and disassembly

BOOTHLINE Manual Powder Coating booths are especially suitable for jobs with a small area or limited capacity and without robot painting.

The suction systems and body design are designed in a way that prevents the powder paint from going outside the cabin. In the construction of these cabinets, powder painted sheet metal, stainless steel or galvanized sheet metal can be used according to request.

The booth can be easily disassembled and assembled with a socket wrench.

The dimensions of the Manual Powder Coating Booths are specially determined according to the size of the product to be painted.

“ MANUFACTURED IN ACCORDANCE WITH EUROPEAN STANDARDS ON SAFETY, AIR FLOWRATE AND AUTOMATION. ”

POWERFUL, ECONOMICAL,
DURABLE!

MODEL	INSIDE-OUT DIM (MM)			FILTERED (-FL)		CYCLONED (-CY)	
	WIDTH	HEIGHT	DEPTH	FILTER QTY.	VACUUM FAN KW/H	DEPTH	KW/H
BOOTHLINE - 800	530-800	1450-2265	1250-1800	1	1,5	1765-1800	MC-9
BOOTHLINE - 1200	930-1200	1450-2265	1250-1800	2	2,2	1765-1800	MC-9
BOOTHLINE - 1500	1230-1500	1450-2265	1250-1800	3	3	1765-1800	MC-17
BOOTHLINE - 2000	1730-2000	1450-2265	1250-1800	4	2,2 * 2PCS	1765-1800	MC-17
BOOTHLINE - 2400	2130-2400	1450-2265	1250-1800	5	2,2 * 2PCS	1765-1800	MC-26
BOOTHLINE - 3000	2730-3000	1450-2265	1250-1800	6	3 * 2PCS	1765-1800	MC-26

SPRAYBOOTH

BOOTHLINE-FL or CY

DESIGNED FOR
MAXIMUM
EFFICIENCY

proton

MASCHINENBAU GMBH

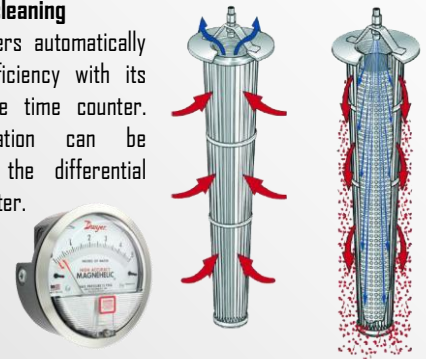
Filter or Cyclone connection

Filtered cabinets require a flue connection. For this reason, in areas where a chimney connection is difficult, BOOTHLINE-CY models with mono cyclone integrated are preferred. The number of filters or Cyclone size in the cabin is determined by the cabin size.



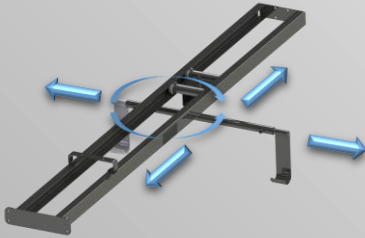
Automatic filter cleaning

It cleans the filters automatically and with full efficiency with its digitally adjustable time counter. Filter contamination can be monitored with the differential pressure manometer.



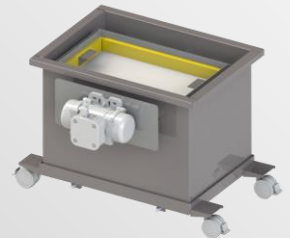
Conveyor or Hanger

It can be integrated into bar transfer conveyor systems. With the models with ears, the product can be passed inside the cabin with a hanger. Standard models have 360 degree rotating and movable hanging equipment.



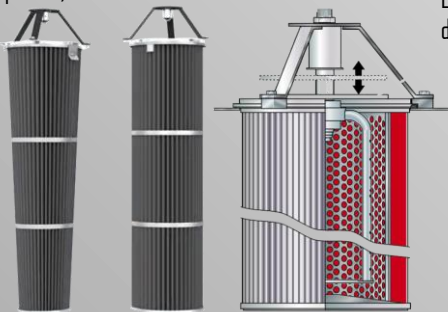
Automatic Sieve and Recycling (optional)

With the optional automatic sieve system, the used paint is sieved and returned directly to the paint gun and can reuse again.



Conic Filters and Cleaning Wings (optional)

Painting booths can be equipped with longer life conical filters instead of standard filters. In standard cabins, the filter cleaning system is of the nozzle type. High efficiency rotary wing cleaning system can be added optionally.



Exproof Parts (optional)

Ex-proof fan, inverter speed control, ex-proof lighting and flame detector can be integrated into the cabins optionally.



Body Shape Options

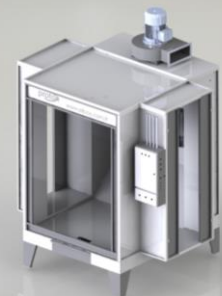
There are different models for different shaped work pieces.



STANDARD



BASELESS



EARED

PAINT STRIPPING TANKS BSK

DESIGNED FOR
MAXIMUM
EFFICIENCY

proton

MASCHINENBAU GMBH

Easy to Use
Clean Environment
Fast Solution



MANUFACTURED IN ACCORDANCE
WITH EUROPEAN STANDARDS ON SAFETY
AND EFFICIENCY.

POWERFUL, ECONOMICAL,
ENVIRONMENT FRIENDLY!

Paint stripping tanks are used in powder paint and wet paint plants to easily and safely remove the paint on the hanging apparatus with paint accumulation over time, and the materials that have been painted in the wrong color or need to be changed.

These tanks, which are produced as heated, can work with various chemicals. Waste accumulation may differ depending on the chemical it works with.

It is produced from highly corrosive acid resistant material. The outside is covered with shiny stainless steel. We have standard models in various sizes. It can also be produced in larger sizes upon request.

Its hinged cover prevents steam from spreading to the work area. Discharge process is provided with a stainless ball valve.

Our paint stripping tanks produced in accordance with European standards are CE certified.

Higher comfort can be achieved with various ancillary equipment.

MODEL	OUT DIM (MM)			USABLE DIMENSIONS (MM)			VOLUME	RIMS (24")	HEATING POWER
	LENGHT	WIDTH	DEPTH	LENGHT	WIDTH	DEPTH	LT	CAPACITY	KW/H
BSK-600-700*700	1100	1000	1100	600	700	700	392	2	12
BSK-1200-700*700	1700	1000	1100	1200	700	700	832	4	22
BSK-1200-1400*700	1700	1700	1100	1200	1400	700	1560	8	44
BSK-1400-400*700	1900	700	1100	1400	400	700	600	2	18
BSK-1800-700*700	2300	1000	1100	1800	700	700	1216	6	32
BSK-2400-700*700	2900	1000	1100	2400	700	700	1600	8	44

PAINT STRIPPING TANKS

BSK

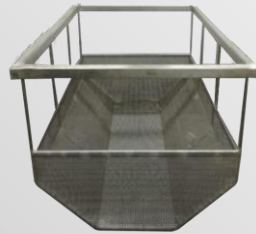
DESIGNED FOR
MAXIMUM
EFFICIENCY

proton

MASCHINENBAU GMBH

Immersion Basket

The workpieces to be paint removed are placed in the tank with a stainless basket. The number and shape of the basket can be arranged upon request.



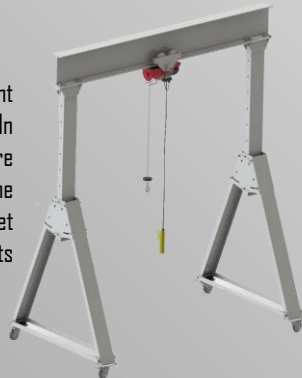
Drip Tray (Optional)

It can be placed in front of the tank so that chemical and paint residues on the workpiece removed from the tank do not drip onto the work area floor. It has swivel and locked wheels. The chemical accumulated in it can be transferred into the tank with its stainless valve. A stainless steel pump can optionally be added for this, or the tray is lifted over the tank with the aid of a forklift and emptied using the valve.



Crane Pillar and Crane (Optional)

The workpieces are immersed in the paint stripping tank with a stainless basket. In order to raise and lower this basket, there should be a crane system on the tank. The portable crane foot allows to lift the basket and move it to the desired area thanks to its rotating wheels.



Mixer (Optional)

The stainless mixer that can be placed in the tank ensures that the chemical in the tank works more efficiently and for a long time.



Automatic thermostat

It keeps the chemical inside at a constant temperature with its automatic thermostat. The digital time counter warns the working personnel by signaling at the end of the process.



Stripping booth (Optional)

The workpiece whose paint has softened should be cleaned with pressurized water after it is removed from the tank. This cleaning process should be done in a special cabinet to prevent environmental pollution. This cabin can be placed in the desired area thanks to the movable and locked wheels underneath. The waste paint is separated from the waste liquid with the wire screen protector before the waste valve.



Piston cover (Optional)

In our standard models, tank covers have gas springs. When you manually lift the cover, it pulls itself up. But we also offer pneumatic piston. Thanks to this piston, you can easily open and close the tank cover with the joystick located on the side of the tank.



Hood (with Exproof Fan) (Optional)

Thanks to this hood system, which can be mounted on the paint stripping tank, the spread of odor into the work area is prevented. With the ex-proof fan, all kinds of flammable solvents are safely removed.



MANUAL SANDBLASTING CABINETS SV-LINE

DESIGNED FOR
MAXIMUM
EFFICIENCY



proton

MASCHINENBAU GMBH

Easy to Use
Clean Environment
Fast Solution

A blast cabinet is an effective way to clean, deburr, finish and prep a wide range of materials. No matter which type of media you're using (aluminum oxide, glass beads, silicon carbide, plastic beads, or organic materials, etc.), Blast cabinets designed for continuous blasting will undoubtedly increase your production and lower your costs by replacing those manual, labor intensive operations like sanding, chemical cleaning, acid etching, wire brushing, and deburring.

Injection Shot Blasting Machine has an injection system that sprays the sandblasting consumable mixture with a specific weight of less than 4 g / cm³ to the surface in order to achieve the desired surface quality and in addition to the vacuum effect created by the compressed air during spraying, the speed of the consumable material in the sandblasting line can be increased and decreased by means of the injector. It defines the system with CE certificate and Dust Spread report.

Here at Elboy, we have a wide range of blast cabinets for your specific application, including light blast booths in various sizes, heavy pressure shot blast booths, wet blast booths and more.

MANUFACTURED IN ACCORDANCE
WITH EUROPEAN STANDARDS ON SAFETY
FILTRATION AND EFFICIENCY.

POWERFUL, ECONOMICAL,
ENVIRONMENT FRIENDLY!

MODEL	OUT DIM (MM)			USABLE DIMENSIONS (MM)			AIR CONSUMPTION	NOZZLE DIA.	ELECTRIC
	LENGHT	WIDTH	HEIGHT	LENGHT	WIDTH	HEIGHT	LT/MIN	MM	W
SV-900	950	1150	2000	900	700	720	1200	8	380
SV-1000	1100	1250	2000	1000	800	750	1200	8	380
SV-1300	1400	1450	2100	1300	1000	1000	1200	8	380
SV-1800	1900	1450	2100	1800	1000	1000	1200	8	380

** Sandblasting consumables with a specific gravity of less than 4 g / cm³ can be used. (Aluminum Oxides, Glass Spheres, Silicon Carbides, Garnet etc.)
Materials with specific gravity above 7 gr / cm³ such as Steel Shot / Grit and Stainless Steel Shot / Grit cannot be used.

MANUAL SANDBLASTING CABINETS SV-LINE

DESIGNED FOR
MAXIMUM
EFFICIENCY

proton

MASCHINENBAU GMBH

Two sided doors

There are lockable doors on both sides of the booth, that allow workpieces to enter the booth easily. To close the door, you just have to push it. The lock will catch the door itself. In addition, it provides high security with locking clamps.



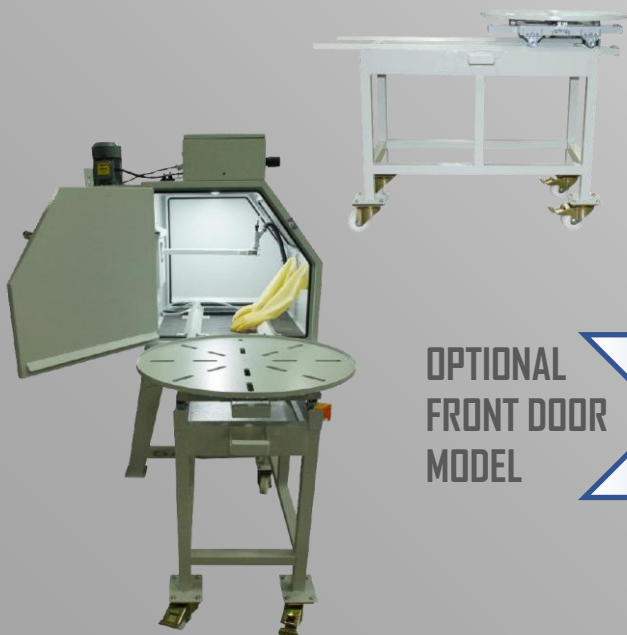
Double Regulator

Injection system has a secondary regulator that allows adjusting the amount of sand as well as adjusting the compressed air used during operation by the regulator.



Rotary Table (Optional)

Blast your products more comfortably with a 65cm diameter manual rotary table that can enter from the cabinet side door.

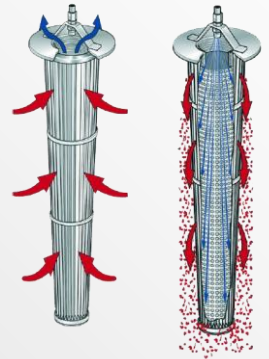


OPTIONAL
FRONT DOOR
MODEL



Automatic filter cleaning

There is a self-cleaning Jet Pulse system with a 1 micron porous cartridge that allows the air to be pressed into the machine to be filtered out.



Uninterrupted work

The machine allows uninterrupted operation by recycling the consumables used automatically during operation.



Nozzles And Sandblasting Guns

The machine package includes an 8 mm Boron Carbide Nozzle and an Aluminum Sandblasting Gun with 4.2 mm injectors as standard. These guns operate at 1.2 m³ / min air consumption value.



POWDER COATING SPRAYGUN SET YB-500

DESIGNED FOR
MAXIMUM
EFFICIENCY



proton

MASCHINENBAU GMBH

POWERFUL, ECONOMICAL,
ENVIRONMENT FRIENDLY!

MULTI-COLOUR



STANDARD



Spray all powders with ease, coat complex geometries with outstanding efficiency and quality and do it all in the most challenging environments.

This paint gun set has a body designed with a stronger and stable structure.

Handles any powder

Today, you're faced with the challenge of spraying a multitude of colors and chemistries. ELBOY Y-B-500 gives you the power and control needed to achieve the best looking finish with any powder.

Optimum ergonomics

The light-weight, ergonomically designed gun provides better in-hand balance and feel allowing you to comfortably position the gun for better coverage and faster coating.

These units bear something...

Industrial strength one piece gun body design, die-cast pump, and steel construction cart provides unparalleled toughness and durability that stand up to any coating environment.

No matter which conditions

No matter where you are, you'll be coating perfectly with the new ELBOY Y-B-500. Whether operating in heat or cold, under dry or humid conditions, ELBOY Y-B-500 delivers outstanding functionality and performance required for any coating environment.

POWDER COATING SPRAYGUN SET YB-500

DESIGNED FOR
MAXIMUM
EFFICIENCY



proton

MASCHINENBAU GMBH



MANUFACTURED IN ACCORDANCE
WITH EUROPEAN STANDARDS ON SAFETY,
QUALITY AND AUTOMATION.



ELBOY Y-B-500 Pneumatic Data	
MAX.input pressure	10bar
MIN.input pressure	6bar
Input pressure (Dynamic based on pressure regulator setting)	5.5 bar / 80 psi
Max.water vapor content of the compressed air	1.3g/Nm ³
Max.oil vapor content of the compressed air	0.1mg/Nm ³
Max.compressed air consumption	8Nm ³ /h



ELBOY Y-B-500 Electrical Data	
Nominal input voltage	110V240VAC
Frequency	50-60Hz
Connected load (without vibrator)	140 VA
Nominal output voltage (to the gun)	eff.10 V
Nominal output current (to the gun)	max. 1.2 A
Connection and output for vibrator (on Aux output)	110/230 VAC max. 100 W
Connection for rinsing function (valve)	24 VDC max. 3 W
Temperature range	0°C - +40°C
Max. surface temperature	120 °C (+248 °F)
Approvals	II 3 D IP54 120 °C



ELBOY Y-B-500	Dimensions
Width	460mm
Depth	862mm
Height	1105mm

POWDER COATING SPRAYGUN SET PC-200

DESIGNED FOR
MAXIMUM
EFFICIENCY



proton

MASCHINENBAU GMBH

POWERFUL, ECONOMICAL,
ENVIRONMENT FRIENDLY!

PC200 IS ONLY SOLD OUTSIDE EUROPE.

Spray all powders with ease, coat complex geometries with outstanding efficiency and quality and do it all in the most challenging environments.

This paint gun set has a body designed with a stronger and stable structure.

Handles any powder

Today, you're faced with the challenge of spraying a multitude of colors and chemistries. PC-200 gives you the power and control needed to achieve the best looking finish with any powder.

Optimum ergonomics

The light-weight, ergonomically designed gun provides better in-hand balance and feel allowing you to comfortably position the gun for better coverage and faster coating.

These units bear something...

Industrial strength one piece gun body design, die-cast pump, and steel construction cart provides unparalleled toughness and durability that stand up to any coating environment.

No matter which conditions

No matter where you are, you'll be coating perfectly with the new PC-200. Whether operating in heat or cold, under dry or humid conditions, PC-200 delivers outstanding functionality and performance required for any coating environment.

CE

POWDER COATING SPRAYGUN SET PC-200

DESIGNED FOR
MAXIMUM
EFFICIENCY

PC200 IS ONLY SOLD OUTSIDE EUROPE.

“

MANUFACTURED IN ACCORDANCE
WITH EUROPEAN STANDARDS ON SAFETY,
QUALITY AND AUTOMATION.

”

proton

MASCHINENBAU GMBH

ELBOY PC-200 Pneumatic Data	
MAX.input pressure	10bar
MIN.input pressure	6bar
Input pressure (Dynamic based on pressure regulator setting)	5.5 bar / 80 psi
Max.water vapor content of the compressed air	1.3g/Nm ³
Max.oil vapor content of the compressed air	0.1mg/Nm ³
Max.compressed air consumption	8Nm ³ /h



ELBOY PC-200 Electrical Data	
Nominal input voltage	110V240VAC
Frequency	50-60Hz
Connected load (without vibrator)	140 VA
Nominal output voltage (to the gun)	eff.10 V
Nominal output current (to the gun)	max. 1.2 A
Connection and output for vibrator (on Aux output)	110/230 VAC max. 100 W
Connection for rinsing function (valve)	24 VDC max. 3 W
Temperature range	0°C - +40°C
Max. surface temperature	120 °C (+248 °F)
Approvals	II 3 D IP54 120 °C



ELBOY PC-200	Dimensions
Width	550mm
Depth	600mm
Height	1105mm



POWDER COATING SPRAYGUN SET STR-SMART

DESIGNED FOR
MAXIMUM
EFFICIENCY



MULTI-COLOR



POWERFUL, ECONOMICAL,
ENVIRONMENT FRIENDLY!

Device Features

- Touch control
- Industry 4.0
- Digital user manual in 4 languages
- Ability to memorize 100 different operating parameters
- Wi-fi connection and remote access
- 32 bit Cortex 18 ARM Microprocessor
- 600 Mhz
- 128 RAM
- 7" TFT Touch Screen 17.17 M Colors



STANDARD



Device Features

- Ergonomic body design
- Durable ex-proof trigger structure
- Nozzle Types Designed for Different Painting Styles
- Injection Casting Cascade Structure with Increased Leakproofness
- IP 6x
- 420 gr Easy to use with its light weight

POWDER COATING SPRAYGUN SET STR-SMART

DESIGNED FOR
MAXIMUM
EFFICIENCY



Technical data

Control Panel	SMART Electro Pneumatic Control Panel
Input Voltage	110 – 240 V AC
Input Frequency	50-60 Hz
Power consumption	25 W
Card Input Voltage	24 V Dc
Card Output Voltage	21 Vpp
Output Frequency	19.5 KHz
Valve Control Voltage	24 V Dc
Corona Current Limit	0-120 µA
Tribo Current Limit	0-5 µA
Electrical Protection Class	IP 54
Operating Ambient Temperature	+20 / +35 C maks.
Powder Coating Flow Rate	0-27 kg/saat
European Standard	EN 50050:2
Air pressure	6 – 8 Bar (maks)
Air Intake Hose Diameters	8 mm (Inner Dia)
Air Consumption	116 lt/dk (7m3 /h)
Ambient Air Quality	Grease 0.01 ppm(maks), Humidity 1,3 gr/m3(max)
Gun Type	Corona System
Weight	460 gr
Gun Length	25 cm (Except Head Group)
Powder Coating Hose Length	6m
Voltage Cable Length	6m
Cascade Input Voltage	Max 21 Vpp
Cascade Input Current	Max 0,9 A
Cascade Output Voltage	Max 100 Kv DC
Cascade Output Current	MAX 120 µA DC
Electrical Protection Class	IP 54
Loading Type (Polarization)	Negative
Powder Coating Output	450 gr / min (max)



POWDER COATING SPRAYGUN SET STR-SMART

DESIGNED FOR
MAXIMUM
EFFICIENCY



Pneumatic data

Smart v2	
Compressed air connection (on control unit)	8 mm
Max. input pressure	5.5 bar / 80 psi
Max. water vapor content of the compressed air	1.3 g/m ³
Max. oil vapor content of the compressed air	0.1 mg/m ³

Dimensions

Smart v2	
Width	173 mm
Depth	250 mm
Height	177 mm
Weight	approx. 3.9 kg



POWDER COATING SPRAYGUN SET STR-SMART

DESIGNED FOR
MAXIMUM
EFFICIENCY



Powder output (guide values)

Powder type	Epoxy/polyester
Powder hose length (m)	5
Powder hose Ø (mm)inner	Ø11
Powder hose type	Antistatic PUR
Input pressure (bar)	5.5



Guide values for Smart v2 with Strong Injector

All values in these tables are guide values. Differing environmental conditions, wear and different powder types can affect the table values.

Total air		3 Nm³/h	4 Nm³/h	5 Nm³/h
		Powder output (g/min)		
Powder output (bar)	2.0	93	100	110
	3.0	165	185	200
	4.0	230	255	270
	5.0	295	320	355
	6.0	330	360	400

Adding **Color** to Your Business

Lighter. (420 GR)

